

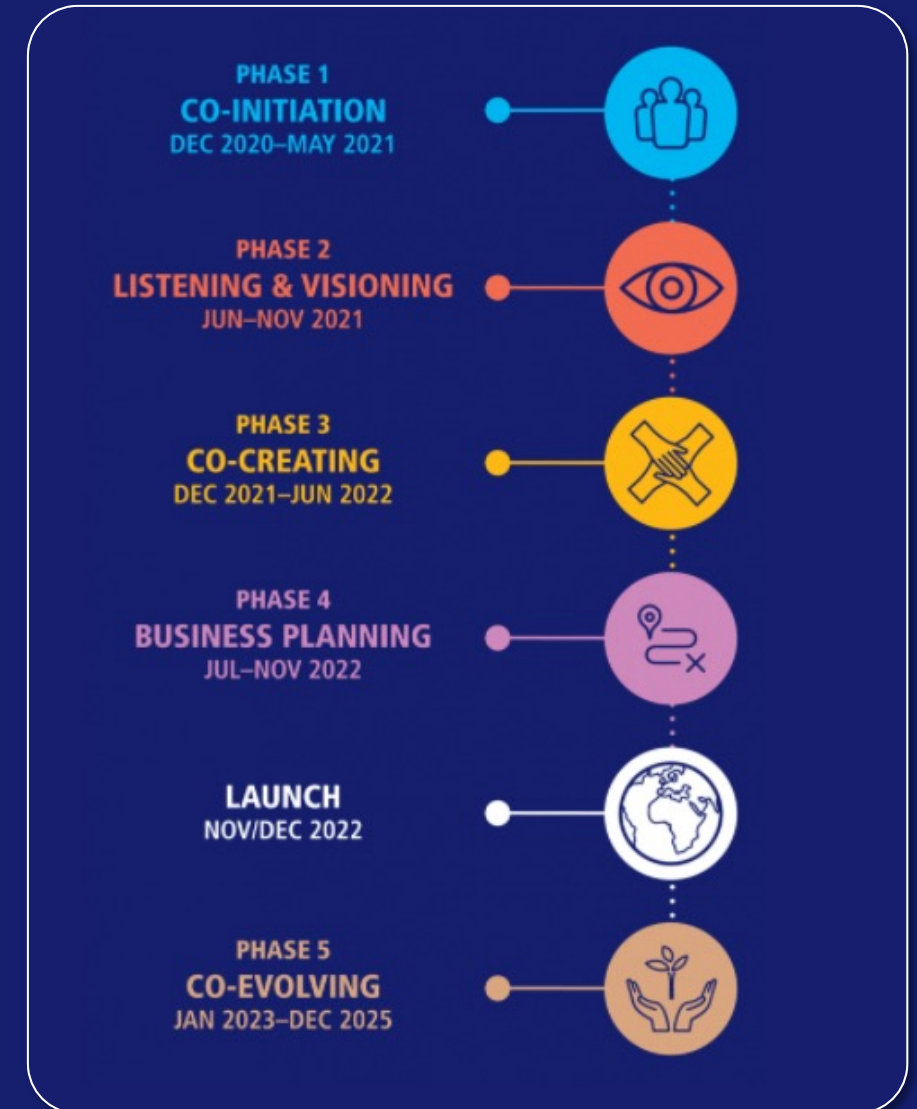
# Service Delivery Footprint

Service delivery contribution



# Background and Justification

- Common statement about IPPF: *IPPF is a global service provider and advocate of sexual and reproductive health and rights for all.*
- Consultant commissioned by the IPPF's Strategy Review Team (SRT) to investigate the SRHR service delivery contributions in countries where IPPF operates, including countries in humanitarian and crisis situations.
- As IPPF is due to develop its next strategic framework spanning the period 2023-28, the findings should support the decisions on the new direction of IPPF in terms of SRH service delivery.



# Methodology and data source

- **Step 1:** ARQAAM – M&E for good (based in Germany) after a tender process
- **Step 2:** Review the scope of work with the consulting firm
- **Step 3:** Shared the necessary MA service data with consultancy firm
- **Step 4:** Regular meetings with the consultancy firm to provide some clarifications
- **Step 5:** The quality review of the final report was done by both the IPPF team and by an external consultant

## Data sources



# Findings – 2016 to 2020

## Abortion related services

- 6.1 million safe abortion services were provided by IPPF (subset of IPPF overall abortion-related services total)
- 6.9% of safe abortion services were provided by IPPF in active countries (considering the induced abortion only)

## Contraception and CYP

- 117 million CYP provided by IPPF; 48 million unintended pregnancy averted by IPPF
- 10.6% of the CYP provided by IPPF
- Out of 122 countries, IPPF was ranked first in 89 (73%) in terms of CYP and unintended pregnancy averted.

## HIV and STI services

- IPPF provides five categories of HIV/STI services consultations, counselling, investigations, management, and prevention (IPPF's priority to quality SRH services).
- 4.5% of all HIV services provided globally (subset of IPPF services – ARV treatment)

# Recommendations and way forward

- The key driver of comparison with other organization should not be the absolute value of the volume of SRH services provided by the efforts to reduce the unmet needs.
- Including some national and global commitment indicators (SDG, ICPD, FP2030, Nairobi Summit etc.) in IPPF dataset to allow effective appreciation of the federation's contribution at national and global levels.
- Accelerate the implementation of IPPF Data Management Strategy (data governance, data access, data quality, data utilization) to ensure the improvement of Institutional information systems for comprehensive and uniform data collection across the Federation.
- Prioritize the digitalization of the Health Management Information System (DHIS2, CMIS, Business Intelligence etc.) and enhance systems interoperability

**Thank You**

